

**DINO<sup>®</sup> 150T**



**DINO Lift<sup>®</sup>**

*Get Lifted<sup>™</sup>*

**T-SERIES**

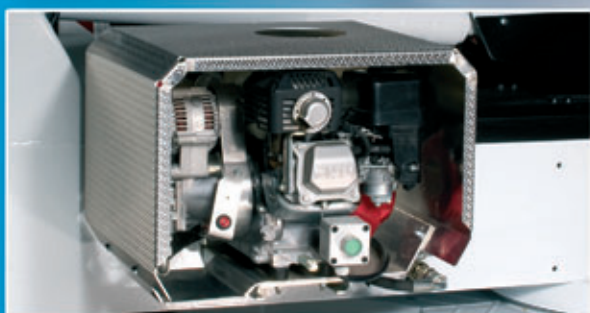


# DINO<sup>®</sup> 150T



## Stable work platform with strong boom

– advanced technology providing a safe working position.



## Optional aggregate

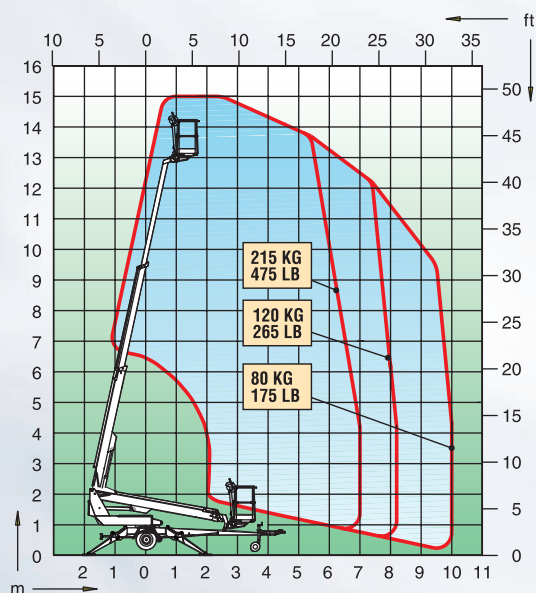
– platform can be used without electricity.



## User friendly controls

– with well defined instructions for the operator.

## Technical specification



Max. working height	15.0 m	49'5"
Max. platform height	13.0 m	42'10"
Max. outreach	10.0 m	32'10"
Support width	3.8 m	12'6"
Lifting capacity	215 kg	475 lb
Basket size	0.7x1.3m	2'4"x4'3"
Boom rotation	cont.	cont.
Basket rotation	90°	90°
Boom control	proport.	proport.
Transport length	6.43 m	21'10"
Transport width	1.78 m	5'10"
Transport height	2.14 m	7'0"
Weight	1665 kg	3665 lb
Driving system	std	std
AC-socket in the basket	std	std
Electro motor	std	std
Petrol power pack	opt.	opt.
Gradeability	25%	25%

The specification is subject to change without notice.

T-series DINOs are lightweight, compact and easy to operate.

Hydraulic outriggers enable quick and easy set up.

Proportional controls and telescopic boom ensure stable and precise access to the work position even at long outreach.

## DINO Lift<sup>®</sup>

Dinlift Oy • Raikkolantie 145  
FI-32210 Loimaa • Finland

Tel +358-2-76 25 900

Fax +358-2-76 27 160

Internet [www.dinolift.com](http://www.dinolift.com)